

Switch Accessories

Power Sheet
PS3000

Support Device: ECS2100-28PP
(One PS3000 can install 3 x EPS460W)

Extend Power Supply
EPS460W

460W extend Power Supply
Support Device: ECS2100-28PP

I/O Modules

EM4510-10G SFP+
10G SFP+ Uplink Optional Module
Supported Devices : ECS4510/4620 Series

Software

Network Management System

ECView System Traffic Analyzer Module Traffic Analyzer

Feature Highlights:

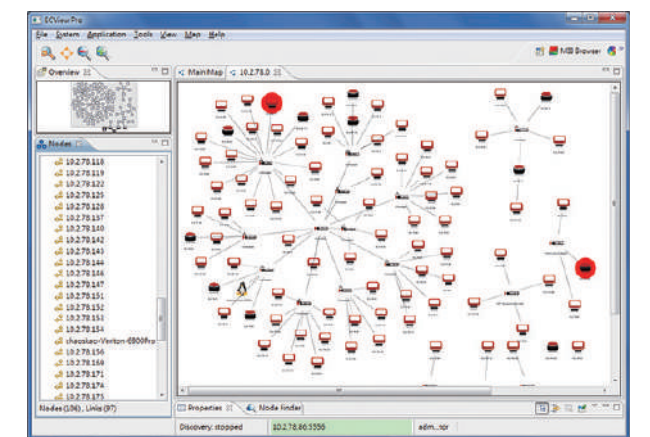
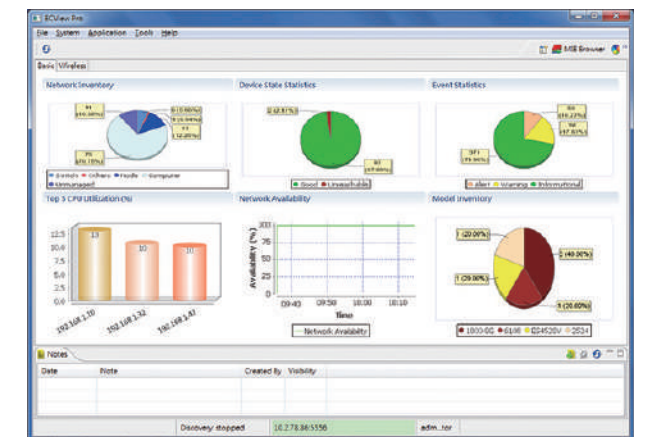
- Multi Vendor Support
- Multiple Protocol Support
- Track Specific Devices Using Profiles
- In-depth Network Traffic Analysis
- Baseline With Past Traffic Flows
- Advanced Prot/ Protocol Filtering

System Requirements for ECView Pro Client/ Server:

- Microsoft Windows 2000 SP4 or higher
- Windows 2003/2008 Server
- Windows XP sp1 or higher, Windows 7
- Solaris 2.8 or higher
- Red Hat Linux
- SusSE Linux

Feature Highlights:

- Multiple Switch Vendor Support
- Multi-Language Support
- SNMP Support
- Support for Multiple Discovery Protocols for Robust Device
- Identification
- Configuration Management
- Asset Management
- Powerful Network Topology Mapping Tool
- Proactive Network Monitoring
- Event Notification and Reporting
- Dashboard for Wireless
- EventViewer for Customize Trap and Update MIB
- Switch Performance Monitor
- MIB Browser
- Advanced Tools: Updated Device ID , Schedule Report, SSH Terminal, Ping/Trace route, MIB Browser, Notifications



Edge-core NETWORKS

About Edgcore Networks
Edgcore Networks delivers wired and wireless networking products and solutions through channel partners and system integrators worldwide for the Data Center, Service Provider, Enterprise and SMB customers. Edgcore Networks is the leader in open networking providing a full line of open WiFi access points, packet transponders, virtual PON OLTs, and 1G, 10G, 25G, 40G, 100G and 400G OCP-ACCEPTE™ switches that offer choice of commercial and open source NOS and SDN software.

www.edge-core.com
Edgcore Networks reserves the right to amend, suspend or cancel these terms and conditions without notices.

© Copyright 2019 by Edgcore Networks Corporation. All rights reserved.

**Additional information : Email: sales@edge-core.com
Tel: +886-3-563-8888 | +1-949-336-6801 (Irvine,CA)**

Edge-core NETWORKS

PRODUCTS AT A GLANCE 2019

Access Wireless Networks

Wireless Access Controller

Wireless Access Controller EWS101

- Port Interface
WAN: 1 x 10/100/1000Base-T Ethernet
LAN: 4 x 10/100/1000Base-T Ethernet
- Console: 1 x RJ-45
- USB: 1 x USB 3.0
- Managed AP: Up to 20
- Built-in AAA and hotspot gateway functionality
- Policy enforcement, guest Wi-Fi, logging & reporting

Wireless Access Controller EWS204

- Port Interface
WAN: 2 x 10/100/1000Base-T Ethernet, 2 x 100/1000 SFP
- LAN: 6 x 10/100/1000Base-T Ethernet, 2 x 100/1000 SFP
- USB: 2 x USB 3.0
- Console: 1 x RJ-45, 1 x micro USB
- Managed AP: Up to 600
- Built-in AAA and hotspot gateway functionality
- Policy enforcement, guest Wi-Fi, logging & reporting
- WAN load balance
- Redundancy: 3(Max)+1 with automatic synchronization

Wireless Access Controller EWS1000

- Port Interface
WAN: 2 x 10/100/1000Base-T Ethernet, 2 x 10G SFP+
- LAN: 2 x 10/100/1000Base-T Ethernet, 6 x 10G SFP+
- Console: 1 x RJ-45
- USB: 2 x USB 3.0
- Management: 2 x RJ-45
- Managed AP: Up to 10,000
- Built-in AAA and hotspot gateway functionality
- Policy enforcement, guest Wi-Fi, logging & reporting
- WAN load balance
- Redundancy: 3 (Max)+1 with automatic synchronization

Wireless Access Controller EWS5203

- Port Interface
WAN: 2 x 10/100/1000Base-T Ethernet, 1Gbps SFP Combo port
- LAN: 8 x 10/100/1000Base-T Ethernet
- Console: 1 x DB9 (DB9 to RS-232 console cable adapter included)
- USB: 1 x USB 3.0
- Managed AP: Up to 150
- Built-in AAA and hotspot gateway functionality
- Policy enforcement, guest Wi-Fi, logging & reporting
- WAN load balance
- Redundancy: 3(Max)+1 with automatic Synchronization

Wireless Access Controller EWS5207

- Port Interface
WAN: 2 x 10/100/1000Base-T Ethernet, 2 x 10G SFP+
- LAN: 2 x 10/100/1000Base-T Ethernet, 6 x 10G SFP+
- Console: 1 x RJ-45
- USB: 2 x USB 3.0
- Management: 2 x RJ-45
- Managed AP: Up to 1500
- Built-in AAA and hotspot gateway functionality
- Policy enforcement, guest Wi-Fi, logging & reporting
- WAN load balance
- Redundancy: 3(Max)+1 with automatic synchronization

Private Cloud Controller EC-PP1000

- Port Interface
8 x 10/100/1000Base-T Ethernet, Auto-MDIX, RJ-45, 4 x 10G SFP+
- Console: 1 x RJ-45
- USB: 2 x USB 3.0
- Management: 2 x RJ-45
- Number of Managed VC: Up to 250
- Number of Managed AP: Up to 10,000
- Storage: SSD x 2
- Built-in AAA and hotspot gateway functionality
- Policy enforcement, guest Wi-Fi, logging & reporting

Hotspot Gateway

Hotspot Gateway ECH502

- Port Interface
Uplink: 1 x 10/100/1000Base-T Ethernet with 802.3af PoE
- LAN: 1 x 10/100/1000Base-T Ethernet
- USB: 1 x USB 2.0 Port
- Dual-radio Dual-band Wave 2 802.11a/b/g/n/ac, 2x2:2 MU-MIMO with Bluetooth Low Energy(BLE)
- All-in-one: built-in Wi-Fi and user access control
- Integrated guest Wi-Fi platform supporting Facebook, Google+, Line and OpenID
- Tiered Wi-Fi service with usage quotas by bandwidth, volume, and duration
- Quick integration with ticket printer for guest on-demand account generation
- Up to 4 Service Zones, each with completely customizable captive portals and network configurations
- Built-in gateway functionality including DHCP, NAT, and routing profiles

Hotspot Gateway ECH501

- Port Interface
Uplink: 1 x 10/100/1000Base-T Ethernet with 802.3af PoE
- LAN: 1 x 10/100/1000Base-T Ethernet
- USB: 1 x USB 2.0 Port
- Dual-radio Dual-band Wave 2 802.11a/b/g/n/ac, 2x2:2 MU-MIMO with Bluetooth Low Energy(BLE)
- All-in-one: built-in Wi-Fi and user access control
- Integrated guest Wi-Fi platform supporting Facebook, Google+, Line and OpenID
- Tiered Wi-Fi service with usage quotas by bandwidth, volume, and duration
- Quick integration with ticket printer for guest on-demand account generation
- Up to 4 Service Zones, each with completely customizable captive portals and network configurations
- Built-in gateway functionality including DHCP, NAT, and routing profiles

POS Printer EC-PP200

- Power: Input 24VDC / 2.5A (Power cord included)
- Dimensions: 17.6 cm (L) x 14.6 cm (W) x 12.4 cm (H)
- Weight: 1.22 kg (2.69lbs)
- Interfaces: Serial 1 x RS-232
- Print Method: Thermal line printing
- Print Speed: 250 mm/sec
- Print Life: 100 Km
- Print Resolution: 576 dots/line or 512 dots/line
- Effective Print Width: 72mm
- Paper With: 79.5 (+/-0.5mm)
- Character: ASCII 12x24 dots | Graphic font 24x24 dots
- Operating Temperature: 0°C (32°F) to 45°C (113°F)
- Storage Temperature: -10°C (14°F) to 60°C (140°F)
- Certifications: FCC (US), CE (EU), RoHS

Wireless Outdoor Access Point

Outdoor AP ECW05210-L

- Port Interface
Uplink: 1 x 10/100/1000Base-T Ethernet with 802.3af PoE
- LAN: 1 x 10/100/1000Base-T Ethernet
- Console: 1 x RJ-45
- Dual-radio Dual-band Wave 1 802.11a/b/g/n/ac, 3x3:3 MIMO
- IP68 Rating
- Antenna: 2.4 GHz: 2 x Built-in Antenna
- 5 GHz: 2 x External RPSMA Connectors
- Antenna Type: 6 x External N-type connectors
- Operating Temperature: -30°C (-22°F) to 70°C (158°F)
- Pole Mount

Outdoor AP ECW05212-L

- Port Interface
Uplink: 1 x 10/100/1000Base-T Ethernet, Auto MDIX, RJ-45 with 802.3af PoE
- LAN: 1 x 10/100/1000Base-T Ethernet, Auto MDIX, RJ-45
- Console: 1 x RJ-45
- Dual-radio Dual-band 802.11a/b/g/n/ac, 2x2:2 MIMO
- IP68 Rating
- Antenna: 2.4 GHz: 2 x Built-in Antenna
- 5 GHz: 2 x External RPSMA Connectors
- Antenna Type: 6 x External N-type connectors
- Operating Temperature: -30°C (-22°F) to 70°C (158°F)
- Pole Mount

Outdoor AP ECW05211-L

- Port Interface
Uplink: 1 x 10/100/1000Base-T Ethernet, Auto MDIX, RJ-45 with 802.3af PoE
- LAN: 1 x 10/100/1000Base-T Ethernet, Auto MDIX, RJ-45
- Console: 1 x RJ-45
- Dual-radio Dual-band Wave 2 802.11a/b/g/n/ac, 2x2:2 MU-MIMO with Bluetooth Low Energy (BLE), Built-in Global Positioning System (GPS)
- IP68 Rating
- Antenna: 4 x External N-type Omni (2 x 2.4 GHz, 2 x 5 GHz)
- 1 x Built-in BLE PIFA
- 1 x Built-in GPS Patch
- Gain: 5 dBi (2.4 GHz), 7 dBi (5 GHz), 3.8 dBi (BLE), 4 dBi (GPS)
- Operating Temperature: -40°C (-40°F) to 65°C (149°F)
- Pole mount

Outdoor AP ECW05213-L

- Port Interface
Uplink: 1 x 10/100/1000Base-T Ethernet, Auto MDIX, RJ-45 with 802.3af PoE
- LAN: 1 x 10/100/1000Base-T Ethernet, Auto MDIX, RJ-45
- Console: 1 x RJ-45
- Dual-radio Dual-band Wave 2 802.11a/b/g/n/ac, 2x2:2 MU-MIMO with Bluetooth Low Energy (BLE), Built-in Global Positioning System (GPS)
- IP68 Rating
- Antenna: 4 x External Antenna (Horizontal: 38° (2.4 GHz), 30° (5 GHz))
- 1 x Built-in BLE PIFA
- 1 x Built-in GPS Patch
- Gain: 12 dBi (2.4 GHz), 12 dBi (5 GHz), 3.8 dBi (BLE), 4 dBi (GPS)
- Operating Temperature: -40°C (-40°F) to 65°C (149°F)
- Pole mount

Wireless Indoor Access Point

Indoor AP ECW5210-L

- Port Interface
Uplink: 1 x 10/100/1000Base-T Ethernet with 802.3af PoE
- LAN: 1 x 10/100/1000Base-T Ethernet
- USB: 1 x USB 2.0 Port
- Dual-radio Dual-band Wave 2 802.11a/b/g/n/ac, 2x2:2 MU-MIMO with Bluetooth Low Energy(BLE)
- Captive portal and Guest provisioning
- Rogue AP detection & Load balancing
- Fast Layer 2/Layer 3 roaming

Indoor AP ECW5211-L

- Port Interface
Uplink: 1 x 10/100/1000Base-T Ethernet with 802.3af PoE
- LAN: 1 x 10/100/1000Base-T Ethernet
- USB: 1 x USB 2.0 Port
- Dual-radio Dual-band Wave 2 802.11a/b/g/n/ac, 2x2:2 MU-MIMO with Bluetooth Low Energy(BLE)
- Captive portal and Guest provisioning
- Rogue AP detection & Load balancing
- Fast Layer 2/Layer 3 roaming

Indoor AP ECW5410-L

- Port Interface
Uplink: 1 x 10/100/1000Base-T Ethernet with 802.3af PoE
- LAN: 1 x 10/100/1000Base-T Ethernet with 802.3af PoE out
- Console: 1 x RJ-45 Port
- USB: 1 x USB 2.0 Port
- Dual-radio Dual-band Wave 2 802.11a/b/g/n/ac, 4x4 MU-MIMO with Bluetooth Low Energy (BLE)
- Captive portal and Guest provisioning
- Rogue AP detection & Load balancing
- Fast Layer 2/Layer 3 roaming

Data Center / CSP

Distribution Networks

Access Wired Networks

Access Wired Networks

Bare Metal Hardware

100GbE Data Center Switch AS7226-32X with ONIE. Features: 32 x 10G QSFP28, 2 x 10G SFP+ ports. Switch silicon: Broadcom Trident3. CPU: Intel Xeon D-1518. Includes Cumulus, ONL, ONIE, PicOS, IP Infusion, CN-NOS, Pluribus, ONIE options.

L3 GE Switch. L3 GE Stackable Switch ECS4620-28T. L3 GE Fiber Stackable Switch ECS4620-28F. L3 GE PoE Stackable Switch ECS4620-28P. L3 GE PoE Access Switch ECS4100-12PH. L3 GE PoE Access Switch ECS4100-12PH. L3 GE PoE Access Switch ECS4100-12PH.

L2+ Access Switch ECS4100-26TX-ME. L2+ Access Switch ECS4100-28T. L2+ Access Switch ECS4100-28T. L2+ Access Switch ECS4100-52T. L2+ Access Switch ECS4100-52T. L2+ Access Switch ECS4100-52T.

Industrial L2 GE PoE Switch ECIS4500-8P274F. Industrial GE PoE Switch ECIS4500-8P4F. Industrial GE PoE Switch ECIS4500-4P2T2F. Industrial GE PoE Switch ECIS4500-4P4T. Industrial GE PoE Switch ECIS4500-4P4T.

25GbE Data Center Switch AS7326-56X with ONIE. Features: 48 x 25G SFP28, 8 x 10G QSFP28, 2 x 10G SFP+ ports. Switch silicon: Broadcom Trident3. CPU: Intel Xeon D-1518. Includes Cumulus, ONL, ONIE, PicOS, IP Infusion, CN-NOS, Pluribus, ONIE options.

L3 GE Fiber Stackable Switch ECS4620-28F-2AC. L3 GE PoE Stackable Switch ECS4620-28P. L3 GE PoE Stackable Switch ECS4620-28P. L3 GE PoE Stackable Switch ECS4620-28P. L3 GE PoE Stackable Switch ECS4620-28P.

L2+ GE PoE Stackable Switch ECS4100-28P. L2+ GE PoE Stackable Switch ECS4100-28P. L2+ GE PoE Stackable Switch ECS4100-28P. L2+ GE PoE Stackable Switch ECS4100-28P. L2+ GE PoE Stackable Switch ECS4100-28P.

Industrial L2 GE Switch ECIS4500-6T4F. Industrial L2 GE Switch ECIS4500-6T2F. Industrial L2 GE Switch ECIS4500-6T2F. Industrial L2 GE Switch ECIS4500-6T2F. Industrial L2 GE Switch ECIS4500-6T2F.

10GbE Data Center Switch AS5916-54X Family. Features: 48 x 10G SFP+ ports, 6 x 100G uplinks. Deep buffers, Expandable TCAM. Includes Cumulus, ONL, ONIE, PicOS, IP Infusion, CN-NOS, Pluribus, ONIE options.

L2+ GE Stackable Switch ECS4510-28T. L2+ GE Fiber Stackable Switch ECS4510-28F. L2+ GE Access Switch ECS4120-28T. L2+ GE Access Switch ECS4120-52T. L2+ GE Access Switch ECS4120-52T.

L2+ PoE Access Switch ECS4100-52P. L2 GE Ethernet PD/PSE Switch ECS4510-12PD. L2 GE Ethernet PD/PSE Switch ECS4510-12PD. L2 GE Ethernet PD/PSE Switch ECS4510-12PD. L2 GE Ethernet PD/PSE Switch ECS4510-12PD.

Web-Smart Pro GE Switch Edge Switch ECS2100-10T. Edge Switch ECS2100-28T. Edge Switch ECS2100-52T. Edge Switch ECS2100-26T. Edge Switch ECS2100-26T.

10GbE Data Center Switch AS4610-30T with ONIE. Features: 24 RJ45 GbE ports, 4 x 10G SFP+ uplink ports. Includes Cumulus, ONL, ONIE, PicOS, IP Infusion, CN-NOS, Pluribus, ONIE options.

L2+ GE Fiber Stackable Switch ECS4510-28F-DC. L2+ GE Stackable Switch ECS4100-52T. L2+ GE Access Switch ECS4120-28T. L2+ GE Access Switch ECS4120-52T. L2+ GE Access Switch ECS4120-52T.

L2 Access Switch ES35100A / ES35100A-DC. L2 Access Switch ECS3510-28T. L2 Access Switch ECS3510-52T. L2 Access Switch ECS3510-52T. L2 Access Switch ECS3510-52T.

Edge PoE Switch ECS2100-10PE. Edge PoE Switch ECS2100-10P. Edge PoE Switch ECS2100-28P. Edge PoE Switch ECS2100-28P. Edge PoE Switch ECS2100-28P.

1GbE Data Center Switch AS4610-30T with ONIE. Features: 24 RJ45 GbE ports, 4 x 10G SFP+ uplink ports. Includes Cumulus, ONL, ONIE, PicOS, IP Infusion, CN-NOS, Pluribus, ONIE options.

L2+ GE Aggregation Switch ECS4120-28Fv2. L2+ GE Aggregation Switch ECS4120-28Fv2-1. L2+ Access Switch ECS4100-12T. L2+ Access Switch ECS4100-26TX. L2+ Access Switch ECS4100-26TX.

Web-Smart GE Switch ECS2020-10T. Web-Smart GE Switch ECS2020-28T. Web-Smart GE PoE Switch ECS2020-10P. Web-Smart GE PoE Switch ECS2020-28P. Web-Smart GE PoE Switch ECS2020-28P.

Web-Smart GE PoE Switch ECS2020-10P. Web-Smart GE PoE Switch ECS2020-28P. Web-Smart GE PoE Switch ECS2020-28P. Web-Smart GE PoE Switch ECS2020-28P. Web-Smart GE PoE Switch ECS2020-28P.